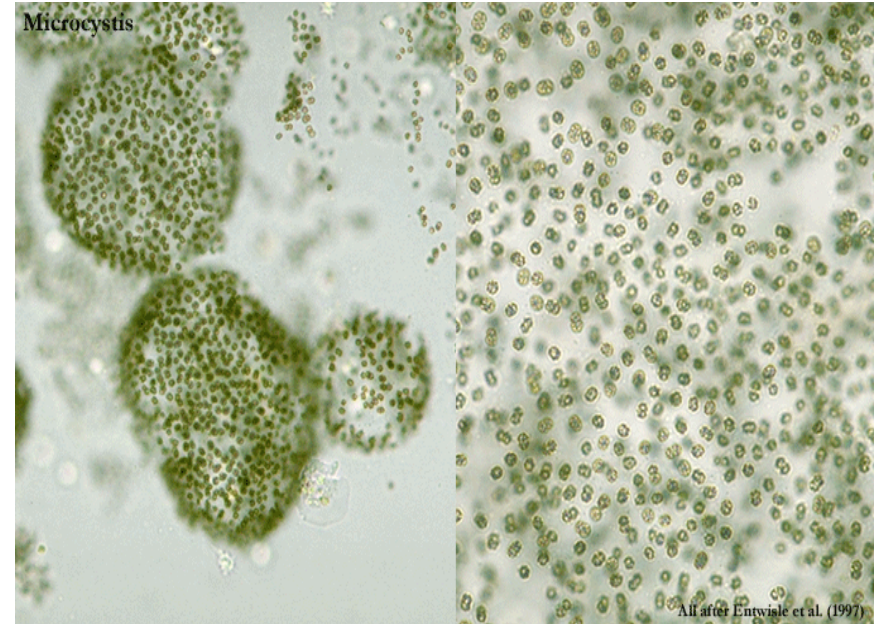
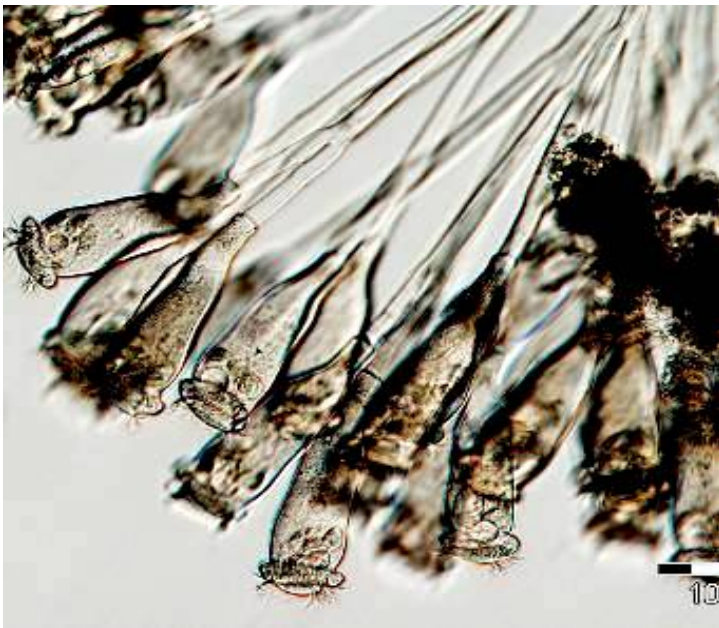




Blue-Green Algae:  
Anabaena



Blue Green Algae: Mycrocystis



Protozoans: Epistyllis

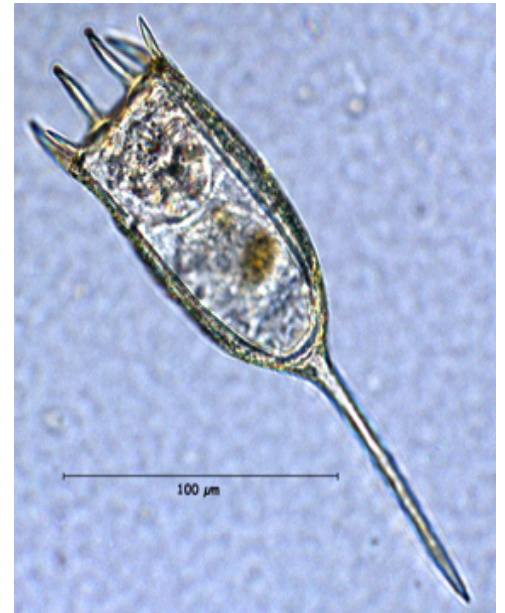
Science on Seneca  
Plankton and  
Zooplankton  
Identification Cards



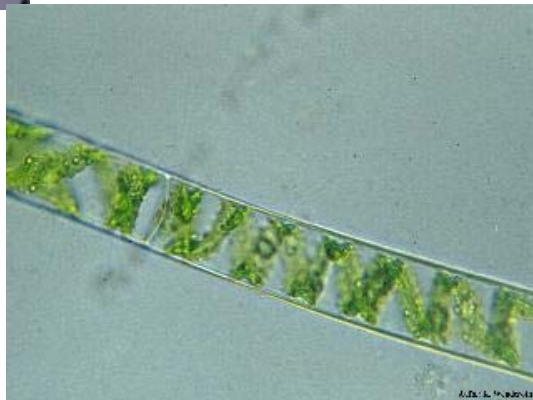
Dinoflagellate: *Ceratium*



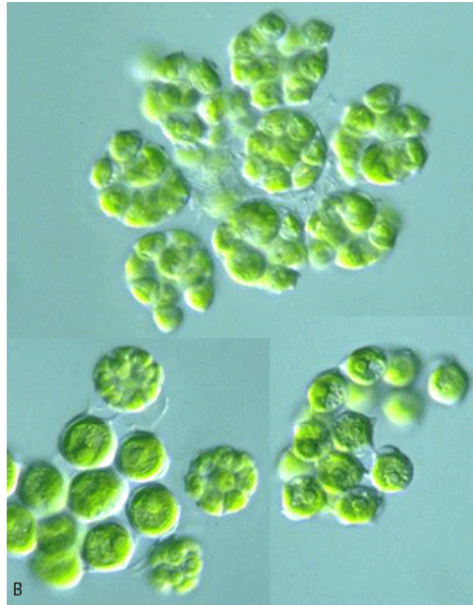
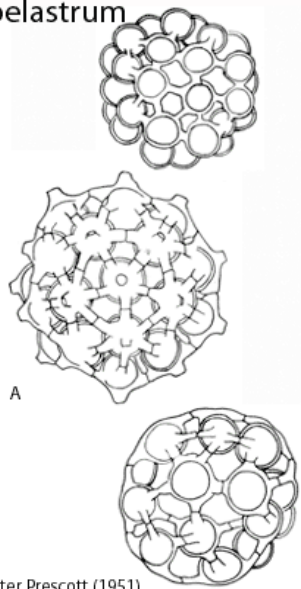
*Keratella*: Rotifer



Green-Yellow Algae:  
*Spyrogyra*

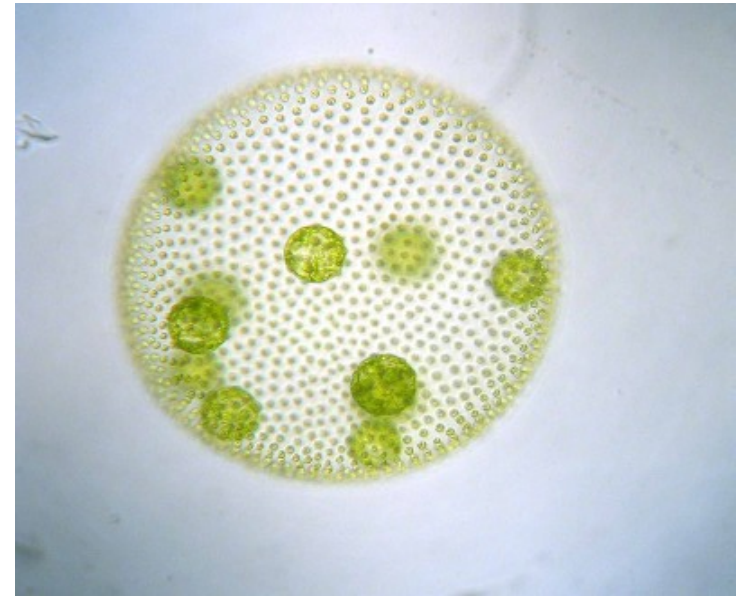


Coelastrum



A after Prescott (1951)  
B © Y. Tsukii, see [http://protist.i.hosei.ac.jp/Protist\\_menuE.html](http://protist.i.hosei.ac.jp/Protist_menuE.html)

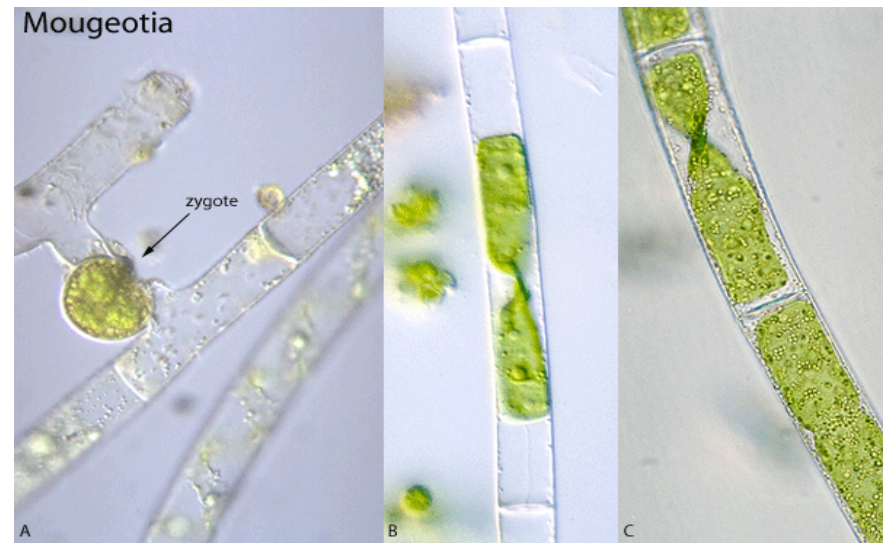
Green-Yellow Algae: Coelastrum



Green-Yellow Algae: Volvox

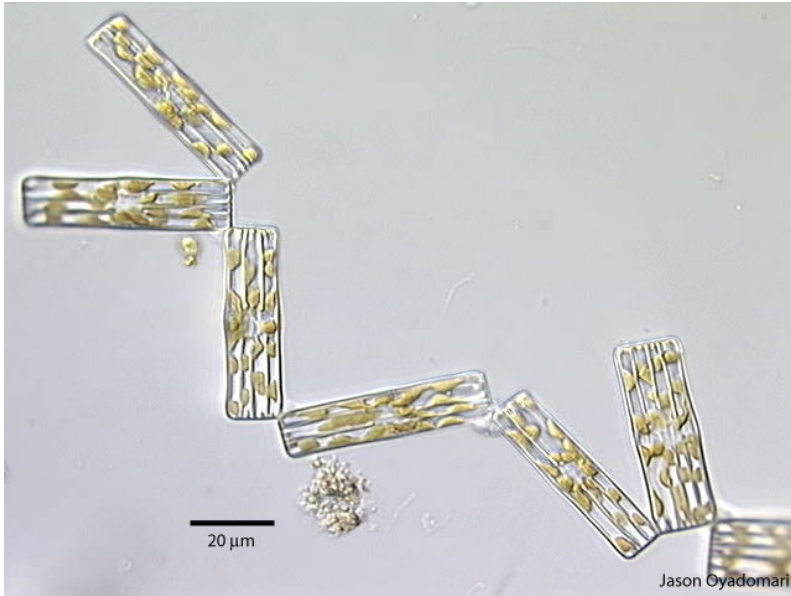


Green-Yellow Algae: Dinobryon

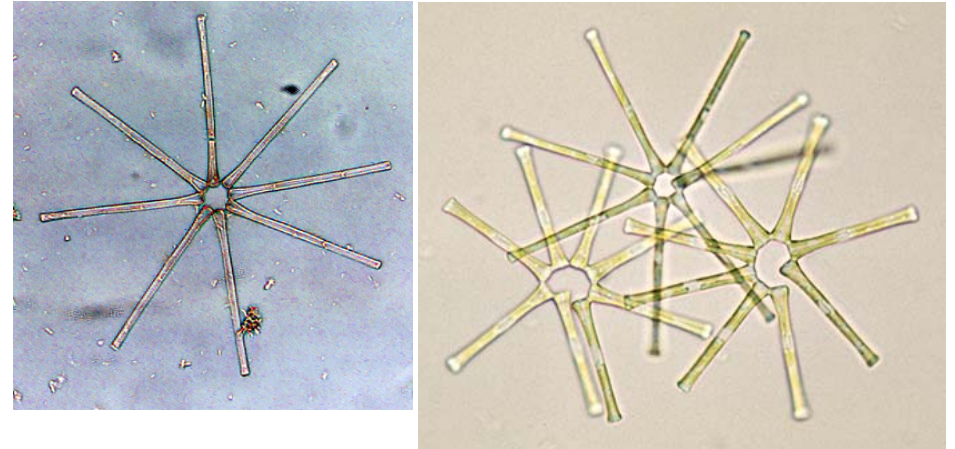


A © Y. Tsukii, see [http://protist.i.hosei.ac.jp/Protist\\_menuE.html](http://protist.i.hosei.ac.jp/Protist_menuE.html)  
B,C after Entwisle et al. (1997)

Green-Yellow Algae: Mougeotia



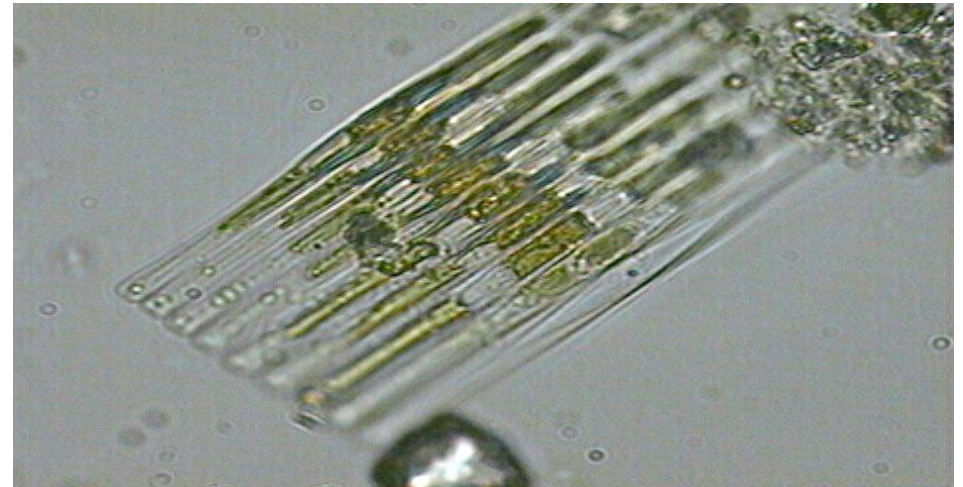
Diatoms: Tabellaria



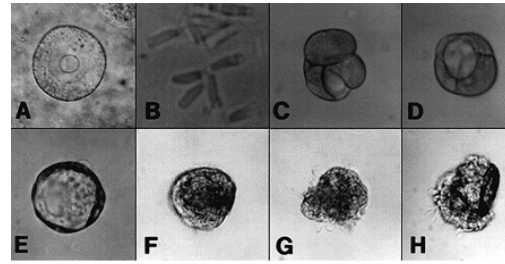
Diatoms: Asterionella



Diatoms: Cymbella

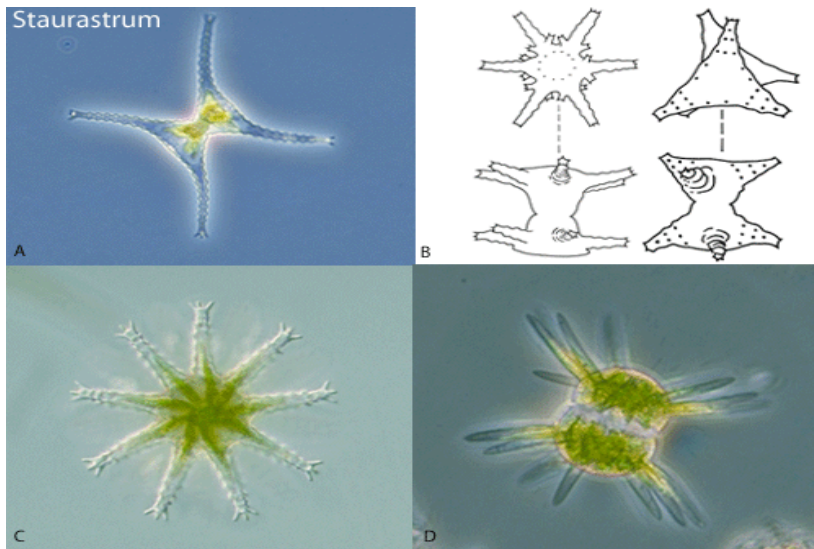


Diatoms: Fragillaria



(A) Zebra mussel, ripe egg. (B) Quagga, ripe sperm.  
 (C-E) Zebra mussel, early divisions showing spiral cleavage.  
 (F) Quagga, ciliated stage. (G) Zebra mussel trochophore.  
 (H) Quagga mussel trochophore with developing shell.

## Mussel Larvae



A, C, D after Entwisle et al. (1997)  
 B © Royal Botanic Gardens & Domain Trust. Artist L. Elkan

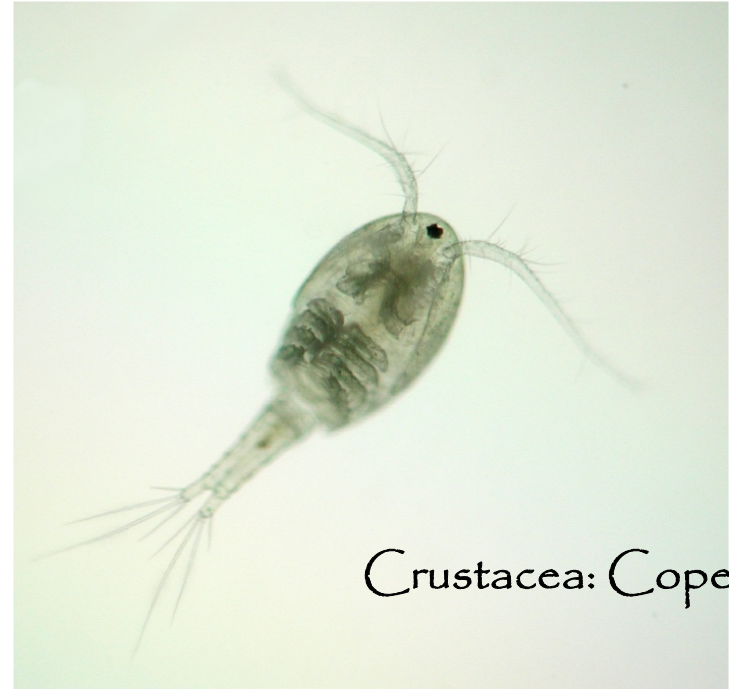
## Desmid: Staurostrum



## Desmid: Closterium



Crustacea: Bosmina



Crustacea: Copepod



Crustacea: Mysis



Crustacea: Daphnia